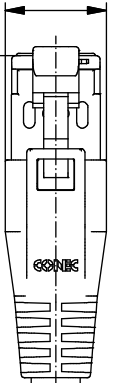
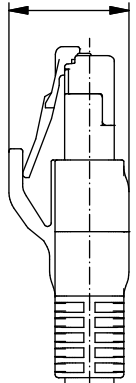


A

13,4

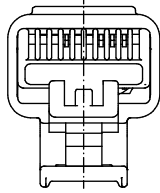


15,9

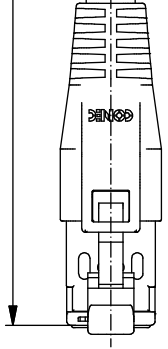


A

1 → 8



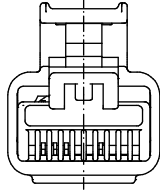
"L"



B

B

8 ← 1



Technical specification:

Technische Daten:

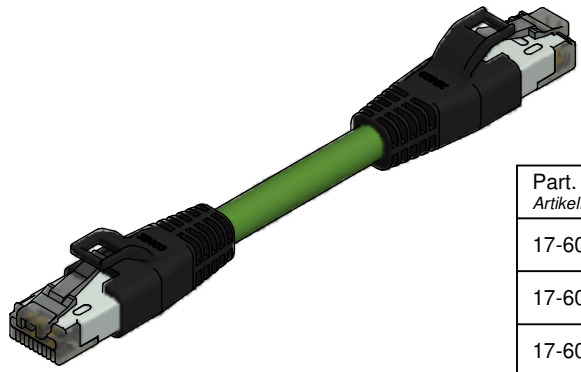
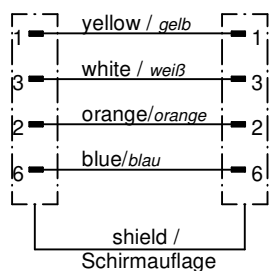
Rated voltage/ Bemessungsspannung:	30 V AC / 42 V DC
Current rating/ Strombelastbarkeit:	1,5 A 1,5 A
Isolation resistance/ Isolationswiderstand:	min. 1000 MΩ
Degree of protection/ Schutzart:	IP20, in mated condition/ IP20, im gesteckten Zustand
Temperature range Connector/ Umgebungstemperatur Stecker:	-40 °C ... +70 °C
Temperature range Wire/ Umgebungstemperatur Leitung:	fixed/ fest: -40 °C ... +70 °C moved/ bewegt: -20 °C ... +60 °C
Mating cycles/ Steckzyklen	>= 750

Materials/

Werkstoffe:	
Contact/ Kontakt:	Copper alloy/ Kupferlegierung
Contact carrier/ Kontaktträger:	PC UL 94 V-0
Contact plating/ Kontaktoberfläche:	Gold over Nickel/ Gold über Nickel
Overmolding/ Umspritzung:	TPU, UL 94 HB, black/schwarz

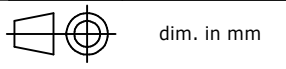
Contact assignment/

Kontaktbelegung:



Part. no./ Artikelnr.:	Description/ Bezeichnung:	Length L/ Länge L:	Cable/ Kabel:
17-60016	RJ - 45S - RS4.003 - RS4.003 - 1 / G6 / 034	1 m	TPU, green / grün, 2x2xAWG22, Cat. 5e Cable/Kabel: 781-G63400
17-60017	RJ - 45S - RS4.003 - RS4.003 - 2 / G6 / 034	2 m	
17-60018	RJ - 45S - RS4.003 - RS4.003 - 5 / G6 / 034	5 m	
17-60019	RJ - 45S - RS4.003 - RS4.003 - 10 / G6 / 034	10 m	
17-6-.....	RJ - 45S - RS4.003 - RS4.003 - / G6 / 034	... m	

tolerance of cable/
 Kabeltoleranz: L ≤ 4m: L + 40mm
 L > 4m: L + 1%



general tolerance/
 Allgemeintoleranz: 0 ± 0,50mm
 0,0 ± 0,25mm
 0,00 ± 0,10mm
 * ± 5°

	Date/Datum	Name
drawn/ gez.	09.11.2018	Heinrich
appd./ gepr.	09.11.2018	Koch

Connecting cable
 RJ45 - RJ45 AWG 22
 Verbindungsleitung
 RJ45 - RJ45 AWG 22

Index: b Ä19-0036 29.03.19 MHE
 Status: Freigegeben

scale/Maßstab:
 1:1



dwg no /
 Z.-nr.: 17K1A828

DIN-
 A4

1 / 1

The reproduction, distribution and utilization of this document as well as the communication of its contents to others without express authorization is prohibited. Offenders will be held liable for the payment of damages. All rights reserved in the event of the grant of a patent, utility model or design. Weitergabe sowie Vervielfältigung dieses Dokuments, Verwertung und Mitteilung seines Inhalts sind verboten, soweit nicht ausdrücklich gestattet. Zuwiderhandlungen verpflichten zu Schadenersatz. Alle Rechte für den Fall der Patent-, Gebrauchsmuster- oder Geschmackschutzanmeldung vorbehalten.