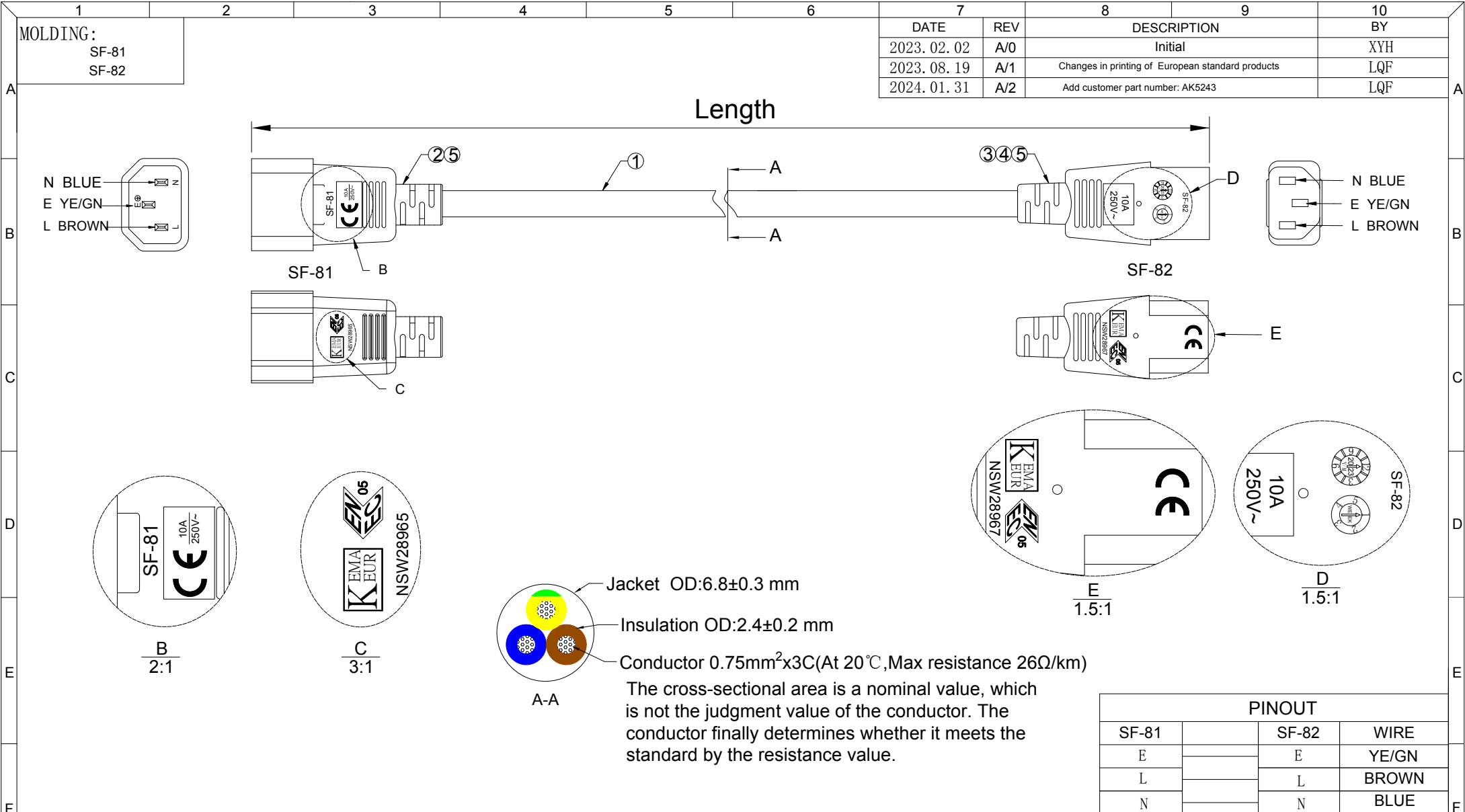


MOLDING:

SF-81
SF-82

DATE		REV	DESCRIPTION	BY
2023. 02. 02		A/0	Initial	XYH
2023. 08. 19		A/1	Changes in printing of European standard products	LQF
2024. 01. 31		A/2	Add customer part number: AK5243	LQF



REMARKS:

- 1.POLARIZATION AND CONTINUITY TEST
- 2.DVW TEST:2000VAC,1S
- 3.PLUG(SF-81) MOLDING PVC RATED POWER:250V 10A
- 4.CONNECTOR (SF-82) MOLDING PVC RATED POWER:250V 10A
- 5.WIRE: H05VV-F 3G 0.75mm²x3C RATED VOLTAGE:300V/500V
- 6.CE LOGO SIZE: 5.0mm

PINOUT			
SF-81		SF-82	WIRE
E		E	YE/GN
L		L	BROWN
N		N	BLUE

WIRE MARKING: (Hollow) NO.930		KEMA-KEUR H05VV-F 3x0.75mm² 300/500V ORDINARY DUTY NSW28976							
Key Size	△	3RD	⊕	⊖	ACT				
Length (mm)	Tolerance								
	Critical	Normal	General						
0-15	±0.05	±0.10	±1.0	Part No.					
15-60	±0.10	±0.20		Description	H05VV-F 3G 0.75mm²x3C SF-81 TO SF-82 CABLE ASS'Y				
60-150	±0.15	±0.35	±1.5	UNIT	mm	APPROVAL	CHECKER	DRAWER	
150-350	±0.20	±0.50		PAGE	1/1			LQF	
350-1000	±0.40	±0.65	±2.0	Draw.No.					

MOLDING:
SF-81
SF-82


7	8	9	10
DATE	REV	DESCRIPTION	BY
2023. 02. 02	A/0	Initial	XYH
2023. 08. 19	A/1	Changes in printing of European standard products	LQF
2024. 01. 31	A/2	Add customer part number: AK5243	LQF

Customer Item NO.	Color	RAL NO. (similar to)	SF-81(C14) Bracket Color	Length (mm)	Supl Color NO.
AK5104	Red	RAL3020	Black	600±15	OR032
AK5105	Red	RAL3020	Black	1200±30	OR032
AK5106	Red	RAL3020	Black	1800±30	OR032
AK5108	Blue	RAL5012	Black	600±15	BU008
AK5109	Blue	RAL5012	Black	1200±30	BU008
AK5110	Blue	RAL5012	Black	1800±30	BU008
AK5112	Green	RAL6018	Black	600±15	GN041
AK5113	Green	RAL6018	Black	1200±30	GN041
AK5114	Green	RAL6018	Black	1800±30	GN041
AK5116	Yellow	RAL1018	Black	600±15	YE007
AK5117	Yellow	RAL1018	Black	1200±30	YE007
AK5118	Yellow	RAL1018	Black	1800±30	YE007
AK5120	Black	RAL9005	Black	1200±30	BK012
AK5029	Black	RAL9005	Black	600±15	BK012
AK5030	Black	RAL9005	Black	1800±30	BK012
AK5164	Black	RAL9005	Black	300±15	BK012
AK5165	Black	RAL9005	Black	900±15	BK012
AK5243	White	RAL9010	Black	600±15	WH123
AK5244	White	RAL9010	Black	1200±30	WH123
AK5245	White	RAL9010	Black	1800±30	WH123
AK5422	White	RAL9010	Black	300±15	WH123



Customer Item NO.	Color	RAL NO. (similar to)	SF-81(C14) Bracket Color	Length (mm)	Supl Color NO.
AK5423	Red	RAL3020	Black	300±15	OR032
AK5424	Blue	RAL5012	Black	300±15	BU008
AK5425	Green	RAL6018	Black	300±15	GN041
AK5426	Yellow	RAL1018	Black	300±15	YE007
AC3315	Black	RAL9005	Black	1800±30	BK012

WIRE MARKING:
(Hollow)
NO. 930

KEMA-KEUR H05VV-F 3x0.75mm² 300/500V ORDINARY DUTY NSW28976

Key Size	Tolerance			
Length (mm)	Critical	Normal	General	
0-15	±0.05	±0.10	±1.0	Part No.
15-60	±0.10	±0.20		Description
60-150	±0.15	±0.35	±1.5	UNIT
150-350	±0.20	±0.50		PAGE
350-1000	±0.40	±0.65	±2.0	Draw.No.

H05VV-F 3G 0.75mm²×3C SF-81 TO SF-82 CABLE ASS'Y

APPROVAL	CHECKER	DRAWER
		LQF