


Description 1

**ACT** Fiber Optical Patch Cord  
 SC/UPC to SC/UPC Duplex Singlemode 9/125, OS2

**Model: xxxx-xxxxxx**  
**IIC-code: xxxxx**

PO/NO.  x'xxxxxx'xxxxxx

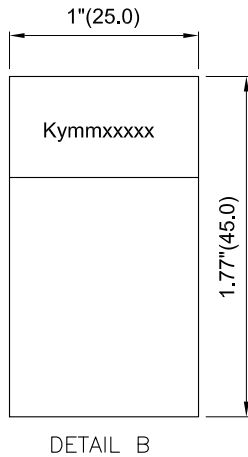
Description 2

Performance: (@23°C)  $\lambda = 1310/1550 \pm 20\text{nm}$

Serial No.	Insertion Loss		Return Loss	
	1310nm	1550nm	1310nm	1550nm
Kymmxxxx	A			
	B			
	C			
	D			

-ACT advices to clean connector ferrule before usage to get optimal performance  
 -Always leave the dust caps on if the cable isn't installed

Prepared By:     QC     Date:           



Specification:

1. SC Connector : SC/UPC Singlemode

Mode	Ferrule	Housing	Boot	Cap
SM Low Loss	Zirconia(ø2.50mm)	Blue(PBT)	Yellow/Blue(TPE)	Clear(PE)

2. 2-1.Cable Type : Zipcord

Category	Jacket O.D.	Jacket Material	Color
G.657A2(9/125um)	ø2.0mm	LSZH	Yellow


2-2.Cable Text Printing : ACT Premium Singlemode Fiber Optic Patch Cable  
 9/125um OS2 LSZH MM/YY xxxxM

3. Length : xM

Performance:

- a. Insertion Loss : Singlemode Average < 0.10 dB, Max. < 0.2 dB.
- b. Return Loss : UPC > 55 dB
- c. Insertion Loss will be increased after 500 mating : 0.2 dB Max
- d. Operating Temperature : -20°C to +70°C
- e. Storage Temperature : -40°C to +80°C

RL3950	50	50	164'(50000)	441250-RL3950	8716065223972
RL3920	20	20	65.6'(20000)	441220-RL3920	8716065223965
RL3915	15	15	49.2'(15000)	441215-RL3915	8716065223958
RL3910	10	10	32.8'(10000)	441210-RL3910	8716065223941
RL3905	05	5	16.4'(5000)	441205-RL3905	8716065223934
RL3903	03	3	9.84'(3000)	441203-RL3903	8716065223927
RL3902	02	2	6.56'(2000)	441202-RL3902	8716065223910
RL3951	51	1.5	4.92'(1500)	4412015-RL3951	8716065223903
RL3901	01	1	3.28'(1000)	441201-RL3901	8716065223897
Part NO.	**	XX	L	Description 1	Description 2

"#": Matching DIM. "*" : Important DIM. Others General DIM.  GENERAL TOLERANCE OF DIMENSIONS X.XXX ±0.005 X.XX ±0.05 X.X ±0.1	DRAWING	27.JUN.2019	YMN	<b>ACT</b>	
	CHECK	27.JUN.2019	DAY		
	APPROVAL	27.JUN.2019	FRANK		
		DATE	NAME	ITEM NO.: RL39XX	
	SCALE	1/1 (A4)	UNIT	mm	DES.: SC-SC 9/125 Duplex OS2 2.0mm LSZH
	DRAWING NO.		SC-SC 9/125 Duplex OS2 2.0mm LSZH(S04)		
	DRAWING CLASSIFICATION		S	SHEET 1 OF 1	