

turned crimp contact, female for wire gauge 1,5mm<sup>2</sup>

Part No. VN02 025 0037 1C

Series

Subseries



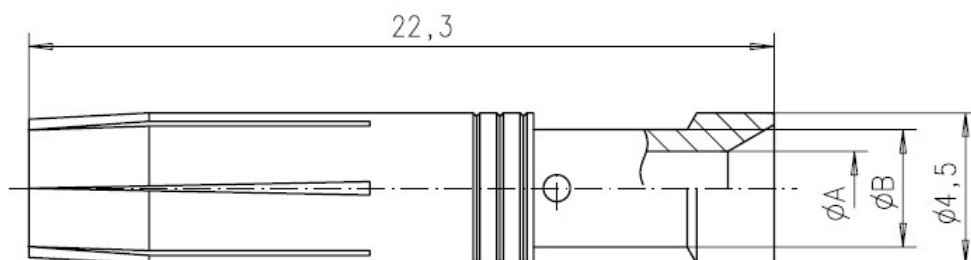
COMMON CHARACTERISTICS		
Contact diameter		2,5 mm
Wire gauge from		1,5mm <sup>2</sup>
Wire gauge (AWG) from		16
Packaging / supplied as		Single contact
No. of pieces		100
Sex of Contact		Socket
Type of contact		Turned crimp contact
CLIMATICAL CHARACTERISTICS		
Upper temperature		+ 125 °C
Lower temperatur		- 40 °C
MECHANICAL CHARACTERISTICS		
Mechanical lifetime		500 mating cycles

turned crimp contact, female for wire gauge 1,5mm<sup>2</sup>

Part No. VN02 025 0037 1C

Series

Subseries



Drawing Dimensions in mm (Inch)

24.06.2013