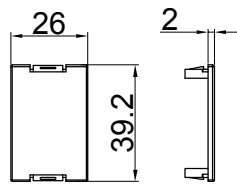
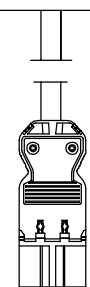
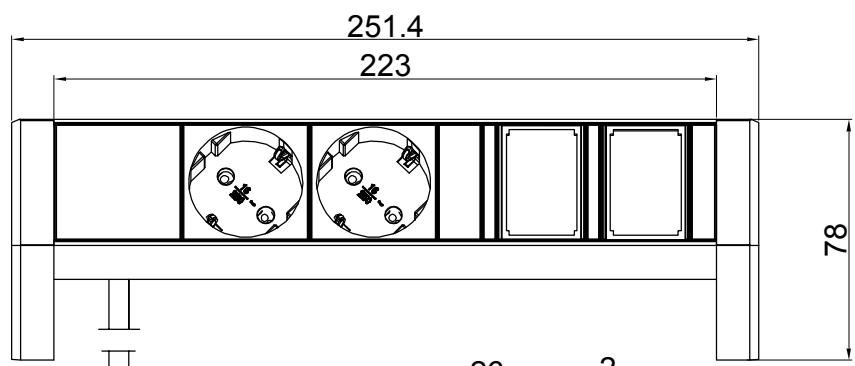
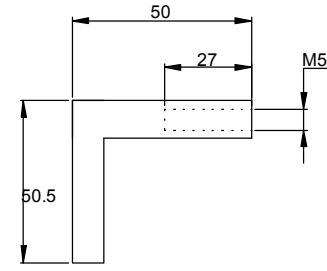
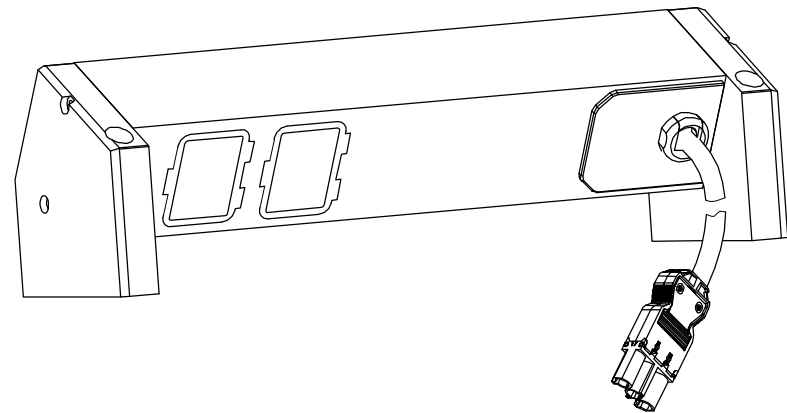
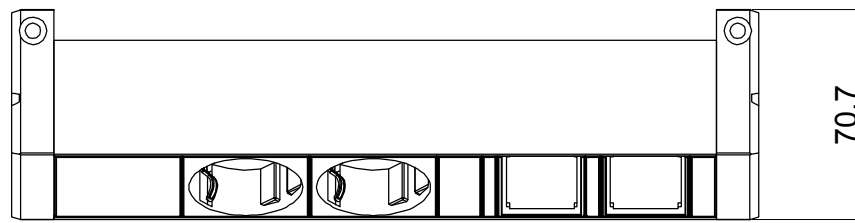


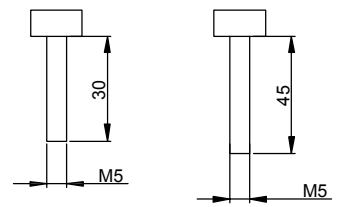
RoHS Compliant



Blank module cover 2PCS



DS Fixing Bolt 2PCS



Screw M5×30 2PCS
Screw M5×45 2PCS

Desk-Top Series	OUTPUT	OPERATING TEMPERATURE
	(2) Schuko Socket with children (16A Rated) (2) Empty module	0° to 60°C
INPUT	BRANCH CIRCUITS	MOUNTING ACCESORIES
250VAC 16A 50HZ EPN1104 Socket 0.6M H05VV-F3G1.5mm ² Power lead	(NONE)	(2)DS Fixing Bolt (2)Screw M5×30 (2)Screw M5×45

Revisions		
Rev	Description	Date

DRAWING TYPE <small>(NO PERMISSION.NO CHANGING)</small>		BN3217	
unit=mm		Housing	Aluminar (Grey)
TECHNICAL STANDARD 1.IT11; 2.NO RUSTNESS 3.NO FLAW ON THE SURFACE			Endcover PA6GF (Black)
Fillet R0.5 Angle ±0.5° FIRST ANGLE		PDS7022	
SCALE 1:3		PLENTY	
		DATE 27-06-2018	