

Multi-Format Video Matrix

AVLINK™



SD-1



SD-2



SD-3



SD-4

USER MANUAL V1.0 SD-1 / SD-2 / SD-3 / SD-4

Package Contents

- 1 x SD-1 / SD-2 / SD-3 / SD-4 Unit
 - 1 x User Manual
 - 1 x Power Adapter DC 12V with Lock
 - 2 x Screws
 - 4 x Foot Pads
 - 1 x Female 1X3 Pole Captive Screw Socket
- Anything missed, please contact with your vendor.

Features

- HDTV resolution up to 1080P@60
- Supports RS-232
- Copy EDID from HDMI OUT A
- HDCP Compliant
- Compliant with the specification of HDMI
- Hot pluggable
- Supports 《AV Matrix》 Management Software

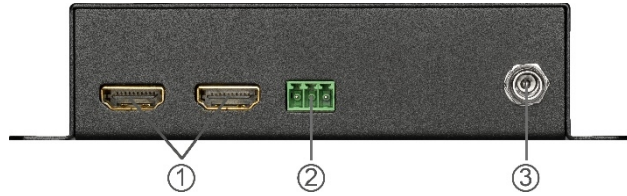
Specifications

Function	SD-1	SD-4
HDMI Input Connector	2 (A-Type Female)	1 (A-Type Female)
HDMI Output Connector	2 (A-Type Female)	
VGA Input Connector	NONE	1
LEDs (Selected)	2 (IN A, IN B)	
Source Select	TACT SW X1, AV Matrix	
Power Adapter (Min.)	DC 12V (LOCKING JACK)	
Max. Resolution	1080P@60 (12 Bits)	
RS-232 Connector	1X3 Pole Captive Screw	
Baud Rate	9600 bps; 8 data bits, 1 stop bit, no parity	
Housing	Metal	
Weight	298g	355g
Dimensions (LxWxH)	120 x 75 x 33mm	

Function	SD-2	SD-3
HDMI Input Connector	2 (A-Type Female)	1 (A-Type Female)
HDMI Output Connector	1 (A-Type Female)	
VGA Input Connector	NONE	1
VGA Output Connector	1	
LEDs (Selected)	2 (IN A, IN B)	
Source Select	TACT SW X1, AV Matrix	
Power Adapter (Min.)	DC 12V (LOCKING JACK)	
Max. Resolution (HDMI Output)	1080P@60 (12 Bits)	
Max. Resolution (VGA Output)	1080P (RGB 12 Bits, YCbCr 4:4:4 12 Bits, YCbCr 4:2:2 8 Bits)	
RS-232 Connector	1X3 Pole Captive Screw	
Baud Rate	9600 bps; 8 data bits, 1 stop bit, no parity	
Housing	Metal	
Weight	355g	363g
Dimensions (LxWxH)	120 x 75 x 33mm	

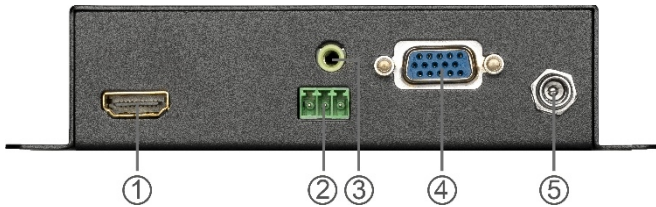
Front View

● SD-1 / SD-2



1. 2 x HDMI Input Connector (A-Type Female)
2. 1X3 Pole Captive Screw (RS-232 Connector)
3. Power Jack (12V DC IN)

● SD-3 / SD-4



1. 1 x HDMI Input Connector (A-Type Female)
2. 1X3 Pole Captive Screw (RS-232 Connector)
3. 1 x 3.5mm Audio Input Connector
4. 1 x VGA Input Connector
5. Power Jack (12V DC IN)

Rx / G / Tx: Use the transmission line with RS-232 to connect the remote control PC for a data transmission between local and remote.



Rx: Receive RS232-level signal pin. (Data in)
G: GND
Tx: Transmit RS232-level signal pin. (Data out)

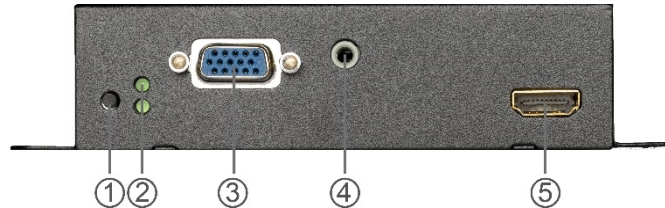
Rear View

● SD-1 / SD-4



1. TACT SW (HDMI IN SELECT)
2. SOURCE LED INPUT (IN A / IN B)
3. 2x HDMI Output Connector (A-Type Female)

● SD-2 / SD-3



1. TACT SW (HDMI / VGA IN SELECT)
2. SOURCE LED INPUT (IN A / IN B)
3. 1 x VGA Output Connector
4. 1 x 3.5mm Audio Output Connector
5. 1 x HDMI Output Connector (A-Type Female)

Installation

1. Turn off the HDMI / VGA source and HDMI / VGA display.
2. Connect the HDMI / VGA cable between the HDMI / VGA source and the "HDMI IN1 or HDMI / VGA IN2" port of SD-1 / SD-2 / SD-3 / SD-4.
3. Connect the HDMI / VGA cable between the HDMI / VGA display and the "HDMI OUT1 or HDMI / VGA OUT2" port of SD-1 / SD-2 / SD-3 / SD-4.
4. Turn on the HDMI / VGA source and display.
5. Select source by TACT SW or RS-232 (AV Matrix)

Matrix Management Software

The 《AV Matrix》 Management Software applies to manage this Multi-Format Video Matrix.



Software Description

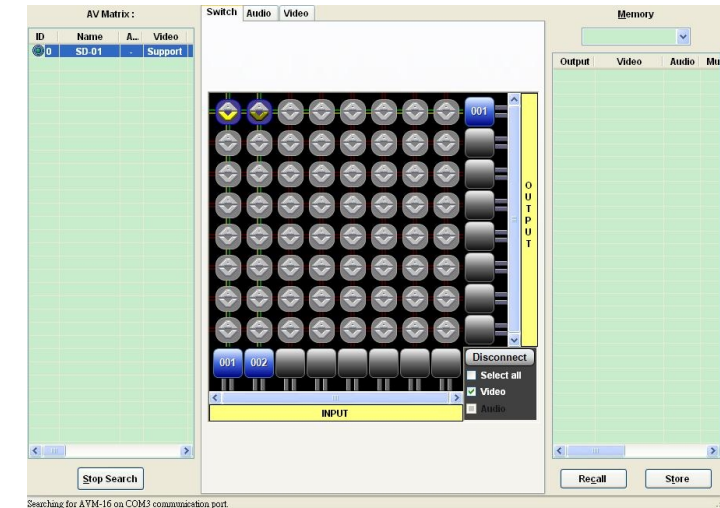
The 《AV Matrix》 Management Software is an application tool developed for matrix testing and managing. The software operation environment requirements as following shown:

- Window98/2000/NT/XP or above operating systems
- 32M internal memory or above
- 10M hard disk space or above
- At least one serial communication port

《AV Matrix》 is Available on AVLINK Website.

<http://www.avlinksystem.com/main/download.html>

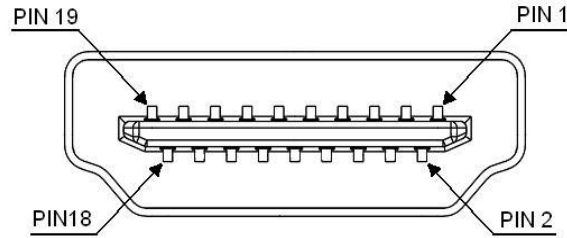
Directly click on the corresponding icons on the AV Matrix  to transform it into  to complete the switching operation. Select the "Input" number key 001 / 002 (IN A / IN B) to the bottom.



Technical Specifications

© C&C TECHNIC TAIWAN CO., LTD. All rights reserved.

HDMI Output Signal



Trademarks:

All the companies, brand names, and product names referred to this manual are the trademarks or registered trademarks belonging to their respective companies.

Pin #	Signal	Pin #	Signal
1	TMDS Data 2+	11	TMDS Clock Shield
2	TMDS Data 2 Shield	12	TMDS Clock -
3	TMDS Data 2-	13	CEC
4	TMDS Data 1+	14	Reserved (N.C. on device)
5	TMDS Data 1 Shield	15	SCL
6	TMDS Data 1-	16	SDA
7	TMDS Data 0+	17	DDC/CEC Ground
8	TMDS Data 0 Shield	18	+5V Power
9	TMDS Data 0-	19	Hot Plug Detect
10	TMDS Clock+		

Support SD2 / SD3 / SD4 VGA Input & Output Mode

Analog	Resolution	Frequency (Hz)
VGA	640x480	60 / 75
SVGA	800x600	60 / 75
XGA	1024x768	60 / 75
SXGA	1152x864	60
WXGA	1280x800	60
SXGA	1280x960	60
SXGA	1280x1024	60 / 75
WXGA+	1440x900	60
	1600x900	60
UXGA	1600x1200	60
1080P	1920x1080	60
720P	1280x720	60