

## VuScape Video Wall Controller

### Visualization solutions for professional and mission-critical applications

VuScape is a high performance video wall processor ideal for small or large video wall deployments in control rooms, collaboration rooms and corporate signage. Easily control and distribute all content sources to any display on your network with the utmost flexibility and full-featured management software.



### Features

- ✓ Power up to 96 displays with a single controller
- ✓ Distribute up to 40x 4K sources with a single controller
- ✓ Mix baseband & IP sources on the same controller (Multiple 4K HDMI/Display Port inputs)
- ✓ Stream up to 160 HD IP streams simultaneously
- ✓ Decoding of IP streams through hardware up to 4K
- ✓ NVIDIA Quadro GPU with 3D Acceleration available
- ✓ Encoding of HDMI inputs or of the video wall up to 4K
- ✓ Single chassis solution for a simplified deployment
- ✓ 24-bit true color image processing at full frame rate
- ✓ Support for standard Windows applications

### VuScape Applications



#### Control Room

**VIDEO WALL CONTROL & KVM**

Increasing productivity with powerful, easy to use technology.



#### Collaboration Room

**CO-CREATION & PRESENTATION**

Bringing efficiency to meeting rooms with productive collaboration.

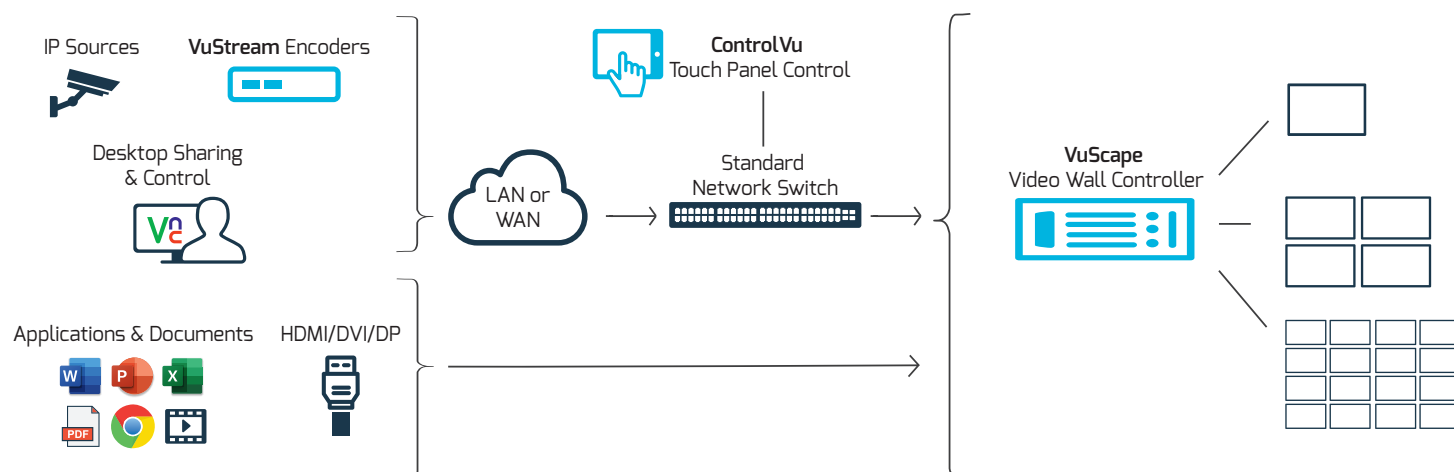


#### Corporate Signage

**CONTENT MANAGEMENT & DISTRIBUTION**

Easily manage and distribute content throughout multi-site organizations.

## VuScape Workflow



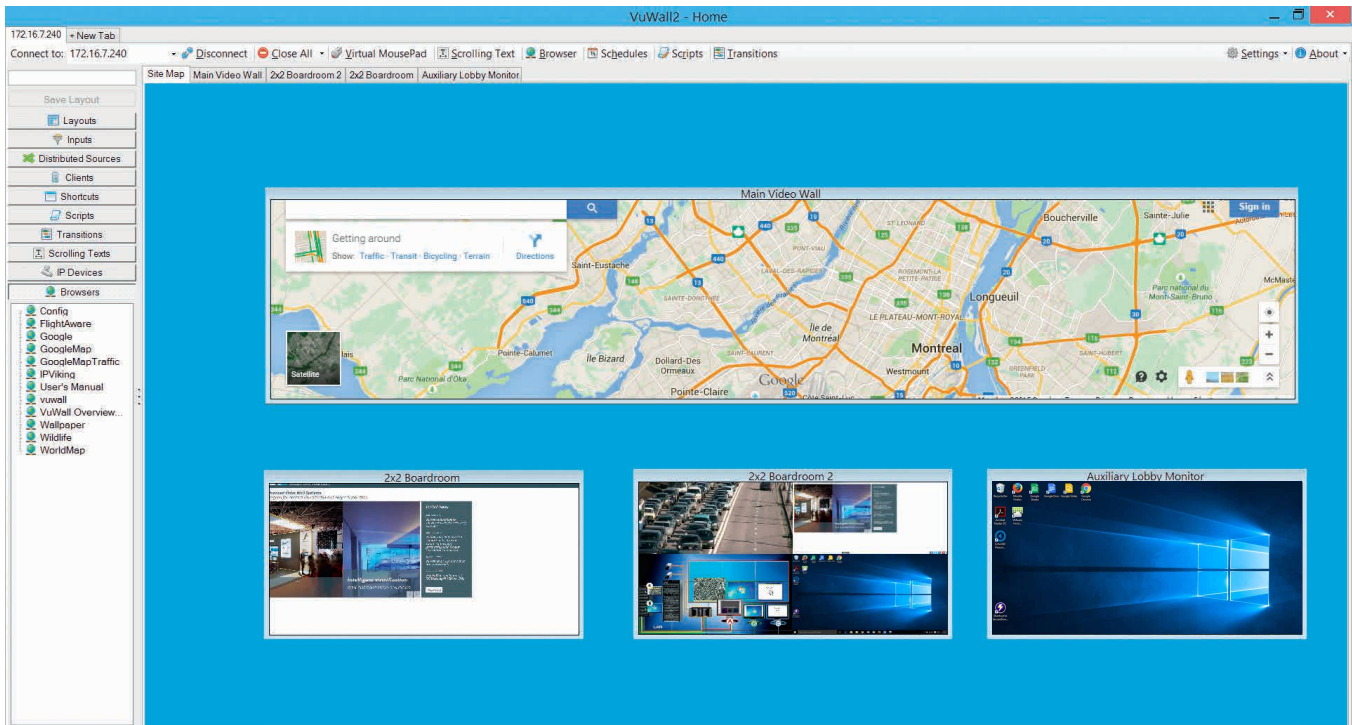
## Selecting the right VuScape video wall controller



VuScape	VS10	VS20	VS60	VS120/280	VS400/640
IDEAL FOR	Single display or small video wall with limited space & network sources only	Small to midsize video wall requiring rackmount unit and additional outputs	Small video wall with limited space and need for GPU & decoding	Midsize video wall with more inputs & outputs and need for GPU & more decoding power	Large video wall with many inputs, outputs and decoding
FORM FACTOR	VESA Mount	Rackmount 1RU	Tower	Rackmount 4RU	Rackmount 4RU each
MAX OUTPUTS	2x 4K	6x 4K	6x 4K	16x 4K	24x 4K or 48x HD
MAX INPUTS	—	—	4x 4K	24x 4K	40x 4K
MAX SIMULTANEOUS IP STREAMS	16x HD / 2x 4K	16x HD / 2x 4K	16x HD / 4x 4K	96x HD / 24x 4K	160x HD / 40x 4K
NETWORK SOURCES	RTSP, websites, VNC, RDP, pictures, text, video files	RTSP, websites, VNC, RDP, pictures, text, video files	RTSP, websites, VNC, RDP, pictures, text, video files	RTSP, websites, VNC, RDP, pictures, text, video files	RTSP, websites, VNC, RDP, pictures, text, video files
WINDOWS 10 APPLICATION	✓	✓	✓	✓	✓

# VuWall2 Video Wall Control Software

VuWall2 is VuScope's powerful software designed to operate both small and large video walls. VuWall2 provides operators with complete control over all connected signal sources and enables the distribution of information in control rooms and presentation spaces. VuWall2 features the most intuitive user interface, reducing reaction times, resulting in the most efficient video wall operations and remarkable visualization experiences.



## Connectivity

VuWall solutions are interoperable and can work seamlessly with multiple systems on the network. From every operator client, users can easily bring sources to any display surface across the network including video walls and operators' desktops.

## Collaboration & Control

Each operator can work with the VuWall client software independently and can manage all sources, displays, and client captures. The multilingual interface is intuitive, very easy for operators to work with within critical environments, even in emergency situations. Operators can collaborate and share content on any kind of display.

## Customization

### Standard Version

Standard control rooms with collaboration requirements and digital signage applications with scheduling.

### Pro Version

Mission-critical and security sensitive control rooms with extensive collaboration requirements and user profile administration.

## VuWall2 Feature Overview

VuWall2 Product Features	Standard	Pro
Easy to use, intuitive web-GUI with standard control pages	○	○
End-to-end encryption between client & server (TLS/HTTPS feature)	○	○
Compatible with Apple, Android, Windows and web browsers	○	○
Load, save and auto-start layouts	○	○
API for third-party devices (Crestron, AMX, etc.)	○	○
Sub-region management	○	○
Task Scheduler	○	○
Control panel designer to create custom interfaces	○	○
Scrolling text and messages with text files & RSS feeds	○	○
Manage input sources incl. OSD and cropping & adjustment	○	○
Manage local applications	○	○
Universal viewer (e.g. pictures, documents, videos)	○	○
Control of third-party devices (displays, matrix switches, etc.)	○	○
Manage multiple video walls from a single client	○	○
Scripting tools (macro commands)	○	○
Embedded Web viewer with support of user credentials	○	○
Active preview of sources on client interface	○	○
Grouping of sources, layouts, and scripts		○
Carousel (advanced cycling of sources)		○
User Profile Management & Active Directory support with Single Sign On (SSO)		○
Security Logging for any events and activity of the user		○
Alarm management (scripting) & support for I/O devices		○
Birds-Eye-View and multi-surface support		○
Hardware and software decoding		○
Capture networked computers & control remotely including VNC		○
KVM on network & input sources		○
<b>Optional Modules</b>		
VMS option (Genetec, Milestone, ISS)		○
External Matrix Support (IHSE KVM Matrix, Crestron Matrix)		○
Encoding & Recording of HDMI inputs, complete wall or area of interest on the wall		○
Transition Management for effects, transparency, color keying, etc.		○
Color Detection on capture and VNC sources		○
Redundancy Module for fault-tolerant systems with dual videowall controllers		○



# VuScape Series 2 Technical Specifications

Model	VuScape VS120 - 2	VuScape VS280 - 2	VuScape VS400 - 2
Hardware			
CPU	Intel® I7 3.6GHz	Intel® XEON 3.5GHz	Intel® I7 3.6GHz
RAM	16GB		
SSD	1x 500GB SSD Optional: RAID1 Hot-plug	2x 500GB SSD RAID1 Hot-plug	2x 500GB SSD RAID1 Hot-plug
Backplane	4x Slot PCI Express X16	7x Slot PCI Express X16	11x Slot PCI Express X16
Network	2x 1GB/s LAN		
Weight	21-25Kg (shipping weight: 32Kg)   46.3-55.1lbs (shipping weight: 70.5lbs)		
Case	19" 4HE case		
Dimensions	428mm W x 176mm H x 467mm D (16.85" x 6.93" x 18.38")		
Power Supply	100-240 VAC, 550W Optional: 2x900W Hotplug, Redundant	100-240 VAC 2x900W Hotplug, Redundant	
Operating Conditions	Temperature 0-35°C (32-95°F) / Humidity 20%-80%		
MTBF	100,000hrs (Fans = 70,000 hrs)		
BTU	Max. 1700BTU/h to Max. 2500BTU/h		
Noise Level	30dB up to 45dB (Depends on system config + room temp)	40dB up to 65dB (Depends on system config + room temp)	
Software			
OS	Windows 10 Enterprise LTSC 64bit		
Management	VuWall2 Video Wall Management Software		
Recovery	Easy Backup & Recovery USB		
Outputs			
DP/HDMI Outputs	Up to 12x	Up to 18x	Up to 18x
Configuration	6x or 9x Outputs per Card / Max. 32000x32000 Pixel per System		
Resolution	VS-2-60 card: MiniDP/HDMI, 6x 1.920x1.200 at 60Hz, 6x 3840x2160 at 30Hz or 3x 3840x2160 at 60Hz per card VS-2-90 card: MiniHDMI, 9x 1.920 x 1.200 at 60Hz		
Inputs			
Display Port 1.2	Up to 6x	Up to 12x	Up to 16x
HDMI 1.4	Up to 12x	Up to 24x	Up to 32x
SDI	6x3G & 6x12G	12x3G & 12x12G	24x3G & 24x12G
Resolution	DP up to 3840x2160 & 4096x2160 @ 60Hz, HDMI up to 3840x2160 @ 30Hz up to 3840x2160 @ 60Hz (4:2:0) 4096x2160 @ 60Hz (4:2:0), 4096x2160 @ 30Hz, SDI up to 3840x2160 @ 60Hz (4:2:2)		
Encoding / Decoding			
IP Software Decoding	Default software decoding of 16x D1 or 8x HD (H.264/MPEG-4 Part 10, MPEG-2, MPEG-4)		
Total possible IP Hardware Decoding	48x 1080p30 or 12x 4K30 per system	96x 1080p30 or 24x 4K30 per system	128x 1080p30 or 32x 4K30 per system
Resolution	Per card 4x 4Kp30 / 16x 1080p30 / 8x 1080p60 / 48x D1 per card encoding or decoding		
Codec Profiles	H.264/MPEG-4 Part 10 (AVC),Up to Level 5.2 ,Baseline profile (BP), Main Profile (MP), High Profile (HiP) High 10 Profile (Hi10P), High 4:2:2 Profile (Hi422P), High 4:4:4 Predictive Profile Separate Plane (Hi444PP) Protocols: RTSP, RTP, MPEG-2-TS, SRT. Unicast/Multicast mode		
Encoding & Recording	Encoding & Recording of HDMI input sources, complete or area of interest on the wall Maximum 4K per encoding channel or an area.		

# VuScape Series 3 Technical Specifications

Model	VuScape VS120 - 3	VuScape VS280 - 3	VuScape VS400 - 3	VuScape VS640 - 3
Hardware				
CPU	Intel® I7 3.6GHz	Intel® XEON 3.5GHz	Intel® I7 3.6GHz	Intel® I7 3.6GHz
RAM	16GB			
SSD	1x 500GB SSD	2x 500GB SSD, RAID1 Hot-plug		
Backplane	4x Slot PCIe X16	7x Slot PCIe X16	9xSlot PCIe X16	11xSlot PCIe X16
Network	2x 1GB/s LAN			
Weight	21-25Kg (shipping weight: 32Kg)   46.3-55.1lbs (shipping weight: 70.5lbs)			
Case	19" 4HE case			
Dimensions	428mm W x 176mm H x 467mm D (16.85" x 6.93" x 18.38")			
Power Supply	100-240 VAC, 550W Optional: 2x900W Hotplug, Redundant	100-240 VAC 2x900W Hotplug, Redundant		
Operating Conditions	Temperature 0-35°C (32-95°F) / Humidity 20%-80%			
MTBF	100,000hrs (Fans = 70,000 hrs)			
BTU	Max. 1700BTU/h	Max. 2500BTU/h	Max. 2500BTU/h	Max. 2500BTU/h
Noise Level	30dB up to 45dB (Depends on system config + room temp)	40dB up to 65dB (Depends on system config + room temp)		
Software				
OS	Windows 10 Enterprise LTSC 64bit			
Management	VuWall2 Video Wall Management Software			
Recovery	Easy Backup & Recovery USB			
Outputs				
DP 1.2 / HDMI 1.4	DP1.2/HDMI1.4: 1 2x 1080@60Hz	DP1.2/HDMI1.4: 24x 1080@60Hz	DP1.2/HDMI1.4: 40x 1080@60Hz	DP1.2/HDMI1.4: 48x 1080@60Hz
HDMI 2.0 up to	HDMI2.0: 6x 3840x2160@60Hz	HDMI2.0: 10x 3840x2160@60Hz Optional: 40x 1080@60Hz	HDMI2.0 24x 3840x2160@60Hz Optional: 96x 1080@60Hz	
Configuration	4x Outputs per Card / Max. 32000x32000 Pixel per System			
Resolution	Per card DisplayPort1.2 /HDMI1.4 Output card: up to 4x 2560x1600 at 60Hz or 2x 3840x2160 at 30Hz Per card HDMI2.0 Output card: up to 4x 3840x2160 at 60Hz			
Inputs				
Display Port 1.2 or HDMI2.0	Up to 6x	Up to 10x	Up to 32x	Up to 32x
DVI/VGA/HDMI	Up to 12x	Up to 24x	Up to 64x	Up to 64x
Resolution	up to 4096x2160 at 60Hz (DP1.2 & HDMI2.0), up to 3840x2160 at 30Hz (HDMI 1.4), 1920 x 1200 (DVI/VGA), 1080i (Component)			
Analog Inputs	Up to 24x	Up to 48x	Up to 128x	Up to 128x
Formats	Composite/S-Video with NTSC/PAL/SECAM (8x / 16x per board)			
HD-SDI Inputs	Up to 12x	Up to 20x	Up to 64x	Up to 64x
Formats	3G SDI, HD-SDI & SDI (SMTPE 352 Payload Identifiers)			
Decoding				
IP Software Decoding	Default software decoding of 16x D1 or 8x HD (H.264/MPEG-4 Part 10, MPEG-2, MPEG-4)			
IP Hardware Decoding	32x 1080p30 or 9x 4K30 per system	60x 1080p30 or 15x 4K30 per system	96x 1080p30 or 24x 4K30 per system	192x 1080p30 or 48x 4K30 per system
Resolution	VS-3-12HDIPD: Per decoding card 3x 4Kp30 / 12x 1080p30 / 8x 1080p60 / 50x D1 per card			
Protocols	Codec: H.264 (MPEG-4 Part 10 AVC), VC-1, MPEG-2 Part 2, MJPEG Protocols: HTTP, RTSP, RTP, UDP and Unicast/Multicast mode			

# VuScape Series 4 Technical Specifications

Model	VuScape VS120 - 4	VuScape VS280 - 4
Hardware		
CPU	Intel® I7 3.6GHz	Intel® XEON E5 3.5GHz Optional: 6/8 Cores CPU
RAM	16GB Optional: 32GB/64GB	
SSD	1x 500GB SSD	2x 500GB SSD RAID1 Hot-plug
Backplane	4x Slot PCI Express X16 (192Gbps)	7x Slot PCI Express X16 (448Gbps)
Network	2x 1GB/s LAN	
Weight	21-25Kg (shipping weight: 32Kg)   46.3-55.1lbs (shipping weight: 70.5lbs)	
Case	19" 4HE case	
Dimensions	428mm W x 176mm H x 467mm D (16.85" x 6.93" x 18.38")	
Power supply	100-240 VAC, 650W	100-240 VAC, 2x900W Hotplug, redundant
Operating conditions	Temperature 0-35°C (32-95°F) / Humidity 20%-80%	
MTBF	100,000hrs (Fans = 70,000 hrs)	
BTU	Max. 1700BTU/h	Max. 2500BTU/h
Noise Level	30dB up to 45dB (Depends on system config + room temp)	40dB up to 65dB (Depends on system config + room temp)
Software		
OS	Windows 10 Enterprise LTSC 64bit	
Management	VuWall2 Video Wall Management Software	
Recovery	Easy Backup & Recovery USB	
Outputs		
DP/HDMI Outputs	Up to 8x	Up to 16x
Configuration	High End NVIDIA Quadro GPU, 4x Outputs per Card, Optional: Genlock card	
Resolution	Per card DisplayPort/HDMI up to 4x 3840x2160 at 60Hz	
Inputs		
Display Port 1.2	Up to 6x	Up to 12x
HDMI 1.4	Up to 12x	Up to 24x
Resolution	DP up to 3840x2160 & 4096x2160 at 60Hz, HDMI up to 3840x2160 at 30Hz up to 3840x2160 at 60Hz (4:2:0) 4096x2160 @ 60Hz (4:2:0), 4096x2160 @ 30Hz	
Encoding / Decoding		
IP Software Decoding	Default software decoding of 16x D1 or 8x HD (H.264/MPEG-4 Part 10, MPEG2, MPEG4)	
Total possible IP Hardware Decoding	48x 1080p30 or 12x 4K30 per system	96x 1080p30 or 24x 4K30 per system
Resolution	Per card 4x 4Kp30 / 16x 1080p30 / 8x 1080p60 / 48x D1 per card encoding or decoding	
Supported Formats	H.264/MPEG-4 Part 10 (AVC),Up to Level 5.2 ,Baseline profile (BP), Main Profile (MP), High Profile (HiP), High 10 Profile (Hi10P), High 4:2:2 Profile (Hi422P), High 4:4:4 Predictive Profile Separate Plane (Hi444PP). Protocols: RTSP, RTP, MPEG2-TS, SRT. Unicast/Multicast mode.	

# VuScape VS10 Technical Specifications

Model	VuScape VS10
<b>Hardware</b>	
CPU	Intel® I5 3,0GHz
RAM	8GB
SSD	1x 120GB SSD
Network	2x 1GB/s LAN
Weight	1.3 Kg   2.86 lbs
Chassis	Slim 1.3 litre metal chassis, black
Dimensions	165mm W x 43mm H x 190mm D (6.49" x 1.69" x 7.48")
Power Supply	External Power Supply with 100-240 VAC, 90W
Operating Conditions	Temperature 0-35°C (32-95°F) / Humidity 20%-80%
MTBF	50,000hrs
Noise Level	max. 30dB (Depends on system config + room temp)
<b>Software</b>	
OS	Windows 10 Enterprise LTSC 64bit
Management	Optional: TRx Management Software or VuWall2 Video Wall Software
<b>Outputs</b>	
DP/HDMI Outputs	Up to 2x
Configuration	1x1, 2x1, 1x2 or (Optional: 2x2 or 4x2 with Optional AdScape Controller or LCD with Daisy-Chain)
Resolution	1x HDMI 2.0: 3840x2160 at 60Hz & 1x DP1.2: 3840x2160 at 60Hz
<b>Inputs</b>	
HDMI	Optional: HDMI Inputs over VuStream Encoder
Browser	Up to 8x Web Browser Windows (Build in Chromium engine)
<b>Encoding / Decoding</b>	
IP Software Decoding	Default software decoding of 16x 1080p30
Total possible IP Decoding	16x 1080p30 or 2x 4K30 per system
Codec Profiles	Codec: H.264 (MPEG-4 Part 10 AVC), MPEG-2 Part 2, MJPEG Protocols: HTTP, RTSP, RTP, UDP and Unicast/Multicast mode



# VuScape VS20 Technical Specifications

Model	VuScape VS20
<b>Hardware</b>	
CPU	Intel® I5 3.0GHz
RAM	8GB
SSD	500GB SSD
Network	2x 1GB/s LAN
Weight	5.8 Kg   12.8 lbs
Chassis	19" 1RU
Dimensions	4.62cm W x 3.56cm D x 4.3cm H (18.1" H x 14" D x 1.7" H)
Power Supply	100-240V – 200W
Operating Conditions	Temperature 0-35°C (32-95°F)   Humidity 20%-80%
Noise Level	30dB up to 45dB (Depends on system config + room temp)
<b>Software</b>	
OS	Windows 10 Enterprise LTSC 64bit
Management	Optional: TRx Management Software or VuWall2 Video Wall Software
<b>Outputs</b>	
Mini Display Port Outputs	Up to 6x
Resolution	Maximum 6x 4096x2160@30Hz or 3x 4096x2160@60Hz
<b>Inputs</b>	
HDMI	Optional: HDMI Inputs over VuStream Encoder
Browser	Up to 8x Web Browser Windows (Build in Chromium engine)
<b>Encoding / Decoding</b>	
IP Software Decoding	Default software decoding of 16x 1080p30
Total possible IP Decoding	16x 1080p30 or 2x 4K30 per system
Codec Profiles	Codec: H.264 (MPEG-4 Part 10 AVC), MPEG-2 Part 2, MJPEG Protocols: HTTP, RTSP, RTP, UDP and Unicast/Multicast mode

# VuScape VS60 Technical Specifications

Model	VuScape VS60
<b>Hardware</b>	
CPU	Intel® i5 3.0GHz
RAM	8GB
SSD	240GB SSD
Network	1x 1GB/s LAN
Weight	7 Kg   15.4 lbs
Chassis	Minitower
Dimensions	35.6 x 16.9 x 43.5 cm (14.0" H x 6.7" D x 17.1" H)
Power Supply	100-240V –250W
Operating Conditions	Temperature 5-35°C (40-95°F)   Humidity 10%-85%
Noise Level	13dB up to 21dB (Depends on system config + room temp)
<b>Software</b>	
OS	Windows 10 Enterprise LTSC 64bit
Management	Optional: TRx Management Software or VuWall2 Video Wall Software
<b>Outputs</b>	
DP/HDMI Outputs	Up to 9x
Resolution	VS-2-60 card: MiniDP/HDMI, 6x 1.920x1.200 at 60Hz, 6x 3840x2160 at 30Hz or 3x 3840x2160 at 60Hz per card VS-2-90 card: MiniHDMI, 9x 1920 x 1200 at 60Hz
<b>Inputs</b>	
DisplayPort 1.2	Up to 2
HDMI 1.4	Up to 4
SDI	2x12G & 2x3G
Resolution	DP up to 3840x2160 & 4096x2160 @ 60Hz, HDMI up to 3840x2160 @ 30Hz up to 3840x2160 @ 60Hz (4:2:0) 4096x2160 @ 60Hz (4:2:0), 4096x2160 @ 30Hz, SDI up to 3840x2160 @ 60Hz (4:2:2)
<b>Encoding / Decoding</b>	
IP Software Decoding	Default software decoding of 16x D1 or 8x HD (H.264/MPEG-4 Part 10, MPEG-2, MPEG-4)
Total Possible IP Hardware Decoding	Up to 4x 3840x2160@30Hz or 8x 1920x1080@60Hz or 16x 1920x1080@30Hz or 48x D1 or any mix thereof without exceeding limits
IP Encoding	Up to 4x 3840x2160@30Hz or 8x 1920x1080@60Hz or 16x 1920x1080@30Hz or 60x D1 or any mix thereof without exceeding limits
Codec Profiles	Codec: H.264 (MPEG-4 Part 10 AVC), MPEG-2 Part 2, MJPEG Protocols: HTTP, RTSP, RTP, UDP and Unicast/Multicast mode
Encoding & Recording	Encoding & Recording of HDMI input sources, complete or area of interest on the wall Maximum 4K per encoding channel or an area.

# VuScape Series



VuScape VS120, VS280, VS400, VS640



VuScape VS280-2 Rear



VuScape VS280-3 Rear



VuScape VS640-3 & VS400-3 Rear



VuScape VS10



VuScape VS10 Rear



VuScape VS20



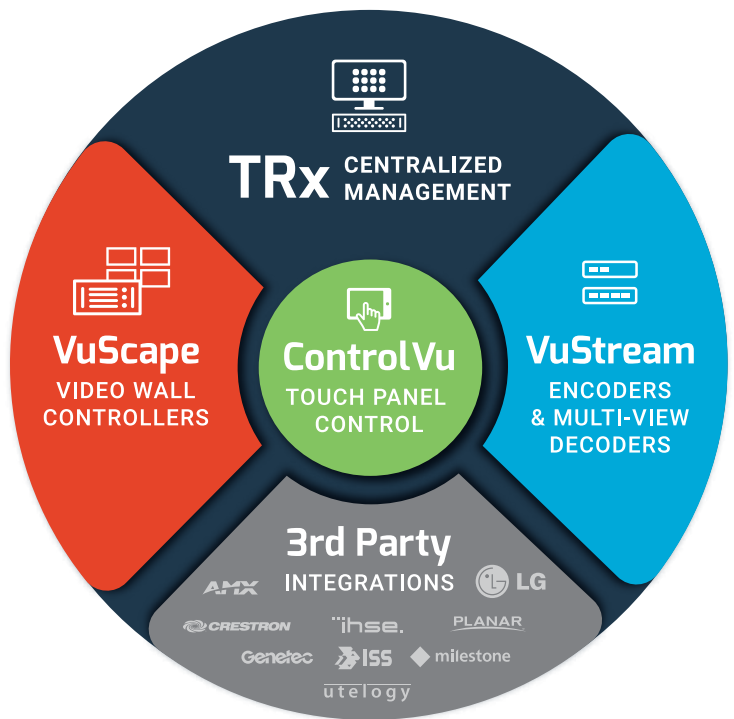
VuScape VS20 Rear



VuScape VS60

## VuWall Ecosystem

The VuWall ecosystem of interoperable products provides the most effective distribution of any source to any display surface throughout entire organizations. VuWall is bridging AV and IT with a hybrid AV-over-IP video wall control system and a standards-based management platform. VuWall solutions have set a new industry benchmark in facilitating video wall deployments and ease of use.



## Extend the Power of VuScape

NEED TO MANAGE SEVERAL VIDEO WALLS?

NEED VIDEO WALL CONTROL AT YOUR FINGERTIPS?

NEED TO DELIVER CONTENT ACROSS YOUR NETWORK?

NEED TO CONTROL COMPUTERS REMOTELY?



### TRx

CENTRALIZED MANAGEMENT



### ControlVu

TOUCH PANEL



### VuStream

ENCODERS & DECODERS



### KM Module

KVM & OPERATOR VISUALIZATION

VuWall Technology Inc.  
181 Hymus Blvd., Suite 301  
Montreal, Quebec  
H9R 5P4, Canada  
T +1 (514) 505 4436

VuWall Technology Europe GmbH  
Lustnauer Strasse 78  
72127 Kusterdingen  
Germany  
T +49 7071 5499 206

Control what you see.  
[www.vuwall.com](http://www.vuwall.com)  
[sales@vuwall.com](mailto:sales@vuwall.com)