

turned crimp contact, male for wire gauge 0,75mm² - 1,0mm²

Part No. VN01 025 0036 1C

Series

Subseries



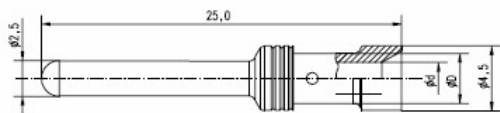
COMMON CHARACTERISTICS		
Contact diameter		2,5mm
Wire gauge from		0,75mm ²
Wire gauge to		1,0mm ²
Wire gauge (AWG) from		18
Packaging / supplied as		Single contact
No. of pieces		100
Sex of Contact		Pin
Type of contact		Turned crimp contact
ELECTRICAL CHARACTERISTICS		
Contact resistance	DIN EN 60512-2-1, Test 2a / IEC 60512-2-1, Test 2a	0 m
MECHANICAL CHARACTERISTICS		
Mechanical lifetime		500 mating cycles

turned crimp contact, male for wire gauge 0,75mm² - 1,0mm²

Part No. VN01 025 0036 1C

Series

Subseries



Drawing Dimensions in mm (Inch)

24.06.2013