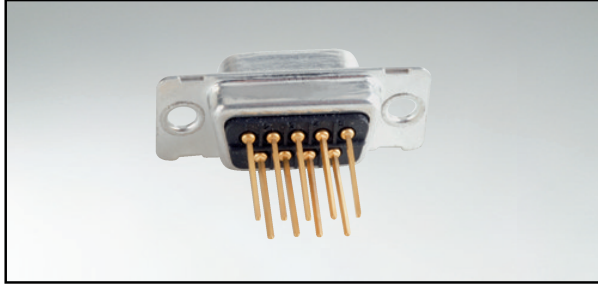


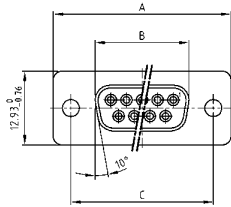
D-SUB STANDARD

Wire wrap – Precision machined contacts



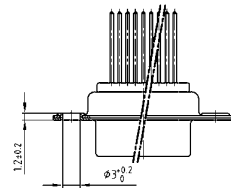
RoHS compliant – CSA listed, File No.: LR 115000-1 – UL listed, File No.: E202784

SOCKET CONNECTOR

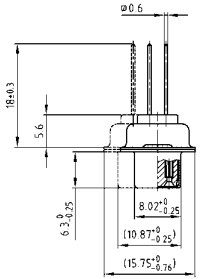
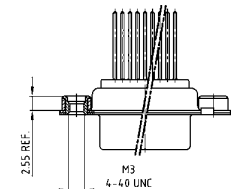


No. of pos.	A -0.76	B -0.25	C
09	31.19	16.46	25.00 +0.12
15	39.52	24.79	33.30 +0.15
25	53.42	38.50	47.04 +0.13
37	69.70	54.96	63.50 +0.13
50	67.31	52.55	61.10 +0.14

Mounting style: Through-hole



Mounting style: Threaded insert

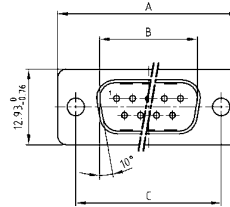


50 pos. = Dim. in (_)

DESCRIPTION

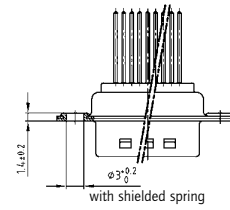
- Mounting styles:
 - with through-hole, $\varnothing .118'' / 3 \text{ mm}$
 - with 4-40 UNC or M3 threaded insert
- Quality class 3 (also available in quality class 1)
- Shell: Steel tin plated (brass tin plated or stainless steel available on request)

PLUG CONNECTOR

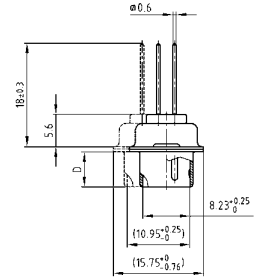
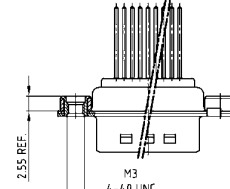


No. of pos.	A -0.76	B -0.25	C	D -0.3
09	31.19	16.79	25.00 +0.12	6.12
15	39.52	25.12	33.30 +0.15	6.12
25	53.42	38.84	47.04 +0.13	5.99
37	69.70	55.30	63.50 +0.13	5.99
50	67.31	52.68	61.10 +0.14	5.99

Mounting style: Through-hole



Mounting style: Threaded insert



50 pos. = Dim. in (_)

ORDER DATA

SOCKET CONNECTOR

No. of pos.	Mounting style	Part Number
09	Through-hole	164 A 10119 X
15	Through-hole	164 A 10129 X
25	Through-hole	164 A 10139 X
37	Through-hole	164 A 10149 X
50	Through-hole	164 A 10159 X
09	4-40 UNC Threaded insert	164 A 10419 X
15	4-40 UNC Threaded insert	164 A 10429 X
25	4-40 UNC Threaded insert	164 A 10439 X
37	4-40 UNC Threaded insert	164 A 10449 X
50	4-40 UNC Threaded insert	164 A 10459 X
09	M3 Threaded insert	164 A 10469 X
15	M3 Threaded insert	164 A 10479 X
25	M3 Threaded insert	164 A 10489 X
37	M3 Threaded insert	164 A 10499 X
50	M3 Threaded insert	164 A 10509 X

PLUG CONNECTOR

No. of pos.	Mounting style	Part Number
09	Through-hole	163 A 11169 X
15	Through-hole	163 A 11179 X
25	Through-hole	163 A 11189 X
37	Through-hole	163 A 11199 X
50	Through-hole	163 A 11209 X
09	4-40 UNC Threaded insert	163 A 11469 X
15	4-40 UNC Threaded insert	163 A 11479 X
25	4-40 UNC Threaded insert	163 A 11489 X
37	4-40 UNC Threaded insert	163 A 11499 X
50	4-40 UNC Threaded insert	163 A 11509 X
09	M3 Threaded insert	163 A 11519 X
15	M3 Threaded insert	163 A 11529 X
25	M3 Threaded insert	163 A 11539 X
37	M3 Threaded insert	163 A 11549 X
50	M3 Threaded insert	163 A 11559 X