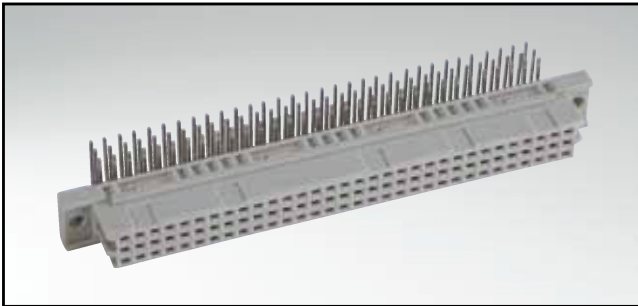


TYPE C

Female connector – straight and angled – 32, 64 and 96 positions



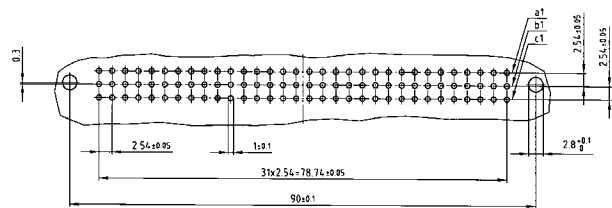
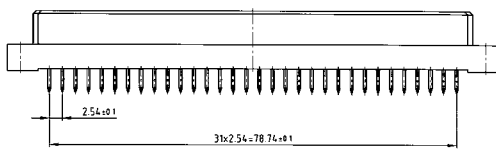
RoHS compliant

DESCRIPTION

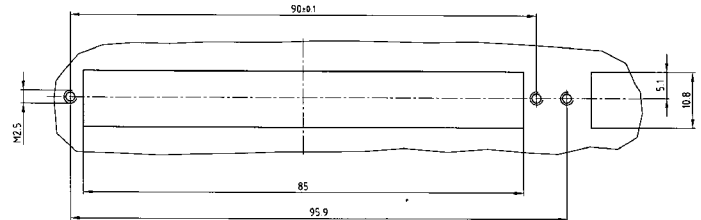
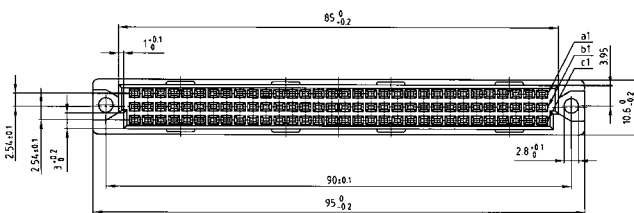
- Solder pin, solder lug and wire wrap
- Quality class 3 (also available in quality class 2 or 1)
- Special assembly on request

PRODUCT DRAWING

PCB-hole pattern



Panel cutout



Wire Wrap

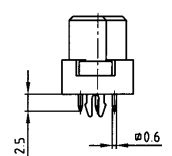
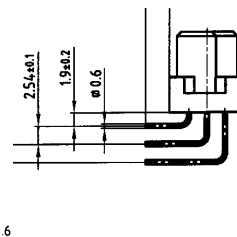
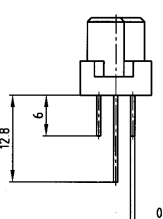
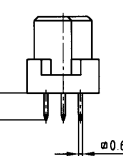
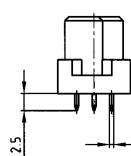
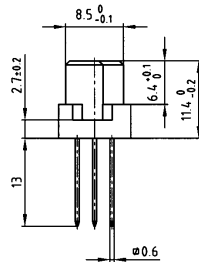
Solder pin straight 2.5 mm

Solder pin straight 4 mm

Solder lug

Solder pin angled

Solder pin straight 2.5 mm with clip



ORDER DATA

(Dim. = mm)

No. of Pos.	Row	• = contact, + = no contact					Wire Wrap	Solder pin straight 2.5 mm	Solder pin straight 4 mm	Solder lug	Solder pin angled	Solder pin straight 2,5 mm with clip	
		Pos.	1	2	3	4							5
32	a		•	•	•	•	•						
	b	+	+	+	+	+	+	122 A 10169 X	122 A 10219 X	122 A 10269 X	122 A 10319 X	122 A 10369 X	122 A 13249 X
	c	+	+	+	+	+	+						
32	a		•	•	•	•	•						
	b	+	+	+	+	+	+	122 A 10179 X	122 A 10229 X	122 A 10279 X	122 A 10329 X	122 A 10379 X	122 A 13259 X
	c	+	•	•	•	•	•						
64	a		•	•	•	•	•						
	b	+	+	+	+	+	+	122 A 10199 X	122 A 10249 X	122 A 10299 X	122 A 10349 X	122 A 10399 X	122 A 13279 X
	c	•	•	•	•	•	•						
96	a		•	•	•	•	•						
	b	•	•	•	•	•	•	122 A 10209 X	122 A 10259 X	122 A 10309 X	122 A 10359 X	122 A 10409 X	122 A 13289 X
	c	•	•	•	•	•	•						

Clip for hole diameter 2.8 + 0.1 mm, PCB thickness = 1.6 mm