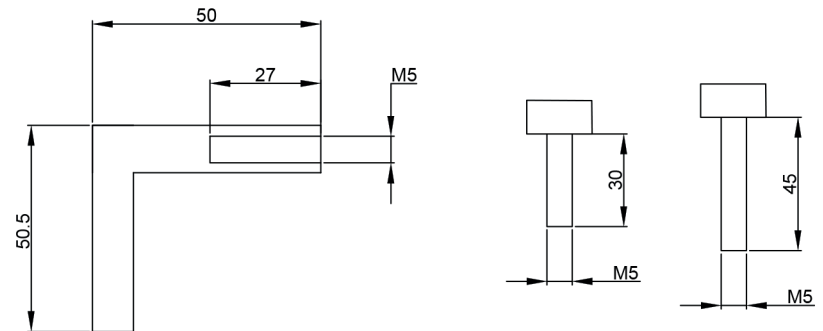
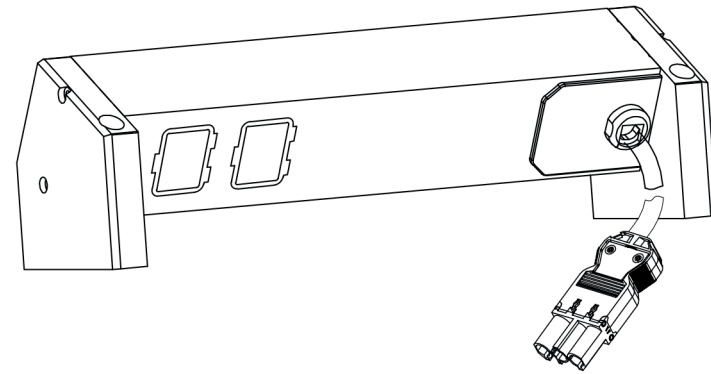
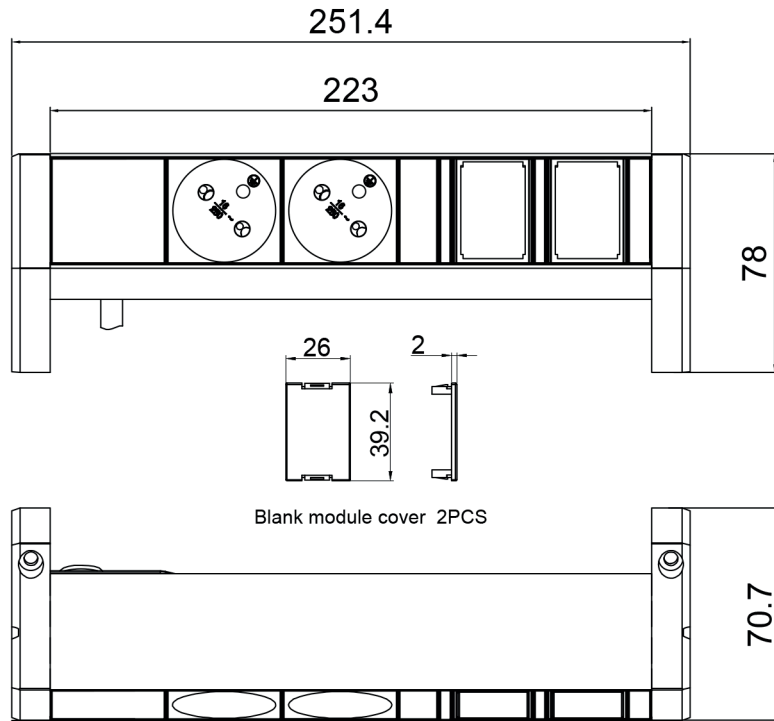


RoHS Compliant



DS Fixing Bolt 2PCS

Screw M5×30 2PCS
Screw M5×45 2PCS

Desk-Top Series All plastic In black	OUTPUT (2) UTE socket with children(16A Rated) (2) Empty module	OPERATING TEMPERATURE 0° to 60°C
INPUT 250VAC 16A 50HZ EP plug 0.6M H05VV-F3G1.5mm ² Power lead	BRANCH CIRCUITS (NONE)	MOUNTING ACCESORIES (2)DS Fixing Bolt (2)Screw M5×30 (2)Screw M5×45

Revisions		
Rev	Description	Date

DRAWING TYPE (NO PERMISSION,NO CHANGING)		BN3258	
unit=mm		Housing	Aluminum Silver anodize
TECHNICAL STANDARD 1.IT11; 2.NO RUSTNESS 3.NO FLAW ON THE SURFACE			Endcover PA6GF (Black)
Fillet R0.5 ANGLE ±0.5° FIRST ANGLE		PDS7022-PA	
		PLENTY	
		DATE 05-12-2019	