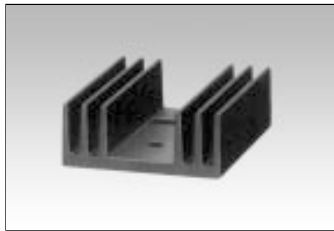


Special heatsinks (Single mounting)

Applications:
(Cases)

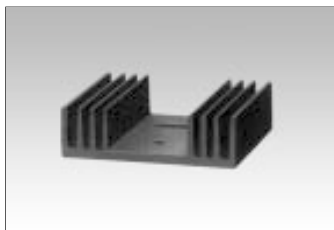
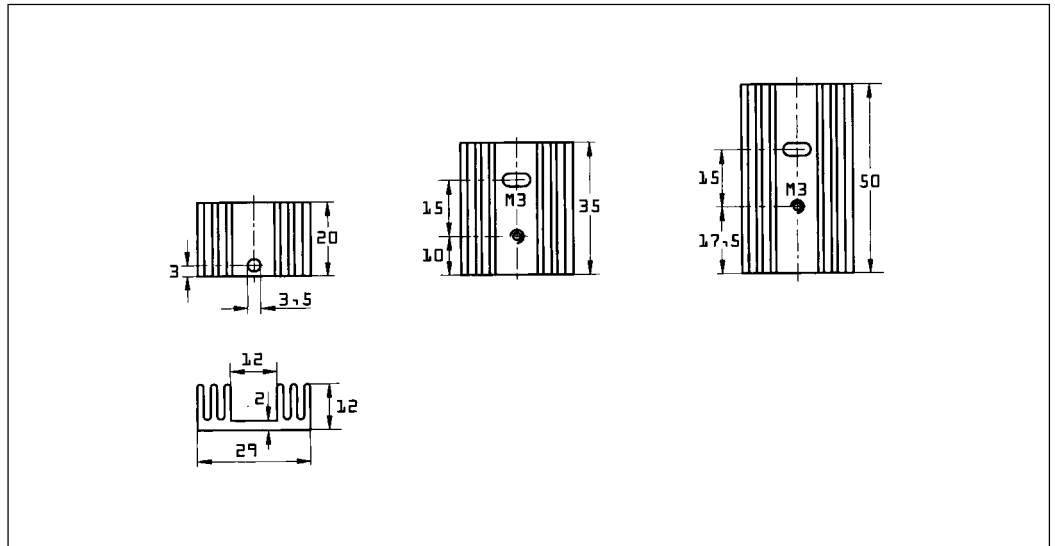


Type	L	RthK (K/W)
PR 19/20/SE	20	13,5
PR 19/35/SE	35	12
PR 19/50/SE	50	9,5

- Aluminium, black anodized
- Basic extrusion (PR20) see page 8
(Extruded heatsinks Standard)

Applications: (Cases)

TO 220

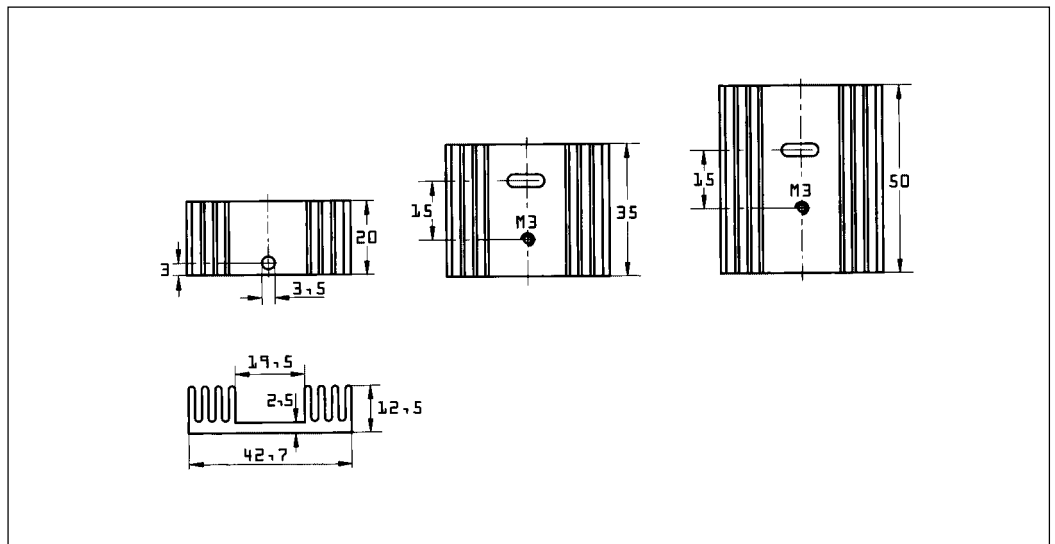


Type	L	RthK (K/W)
PR 21/20/SE	20	11
PR 21/35/SE	35	9,5
PR 21/50/SE	50	8

- Aluminium, black anodized
- Basic extrusion (PR22) see page 9
(Extruded heatsinks Standard)

Applications: (Cases)

TO 220



Type	L	RthK (K/W)
PR 26/20/SE	20	12
PR 26/35/SE	35	10,5
PR 26/50/SE	50	8

- Aluminium, black anodized
- Basic extrusion (PR27) see page 8
(Extruded heatsinks Standard)

Applications: (Cases)

TO 220

